

# LS-LED170 Street Lantern



The LS-LED170 Street Lantern light is an economical solution for a wide range of exterior lighting applications. The luminaire comes in multiple lumen packages from 20-60W and is designed for column/post mounting at heights of 3-8m. The IP66 body is designed for exterior environments, with a sleek silvery grey die-cast aluminium body for harsh weather conditions.

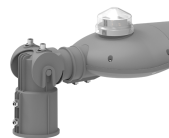
The luminaire is great for urban applications such as car parks, roads, foot paths, residential areas, housing developments, zebra crossings and pedestrian areas. The PMMA optic lens ensures a high degree of uniformity across a range of spaces and reduced light spillage, thus further enhancing this 150lm/W efficacy luminaire to give optimum lux levels throughout. Furthermore, the LS-LED170 Street Lantern is available to upgrade for an inbuilt 3-pin NEMA socket and Lucy Zodion photocell dusk till dawn sensor for further energy savings. The luminaire is 60mm side entry as standard, but has the option of an adjustable tilt bracket which mounts direct onto a 76mm column.

Additional benefits of the light include +60,000 hour maintenance free performance and minimal disturbance to nocturnal wildlife due to the lack of the UV/IR spectrum associated with LED photometric characteristics.



Standard 3/7 pin NEMA available or Zhaga sockets on request

Standard color in Silvergray, Corten Brown, Dark Gray, Matte white, Pine Green, Matte black highly resistant to rust and decay



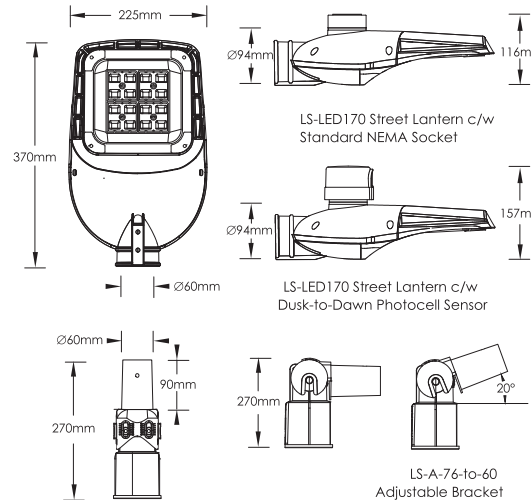
Ø60mm side-entry as standard, optional adjustable bracket for Ø76mm post top

## Product information

Durable with rated life span L70>100,000 hours / No UV or IR emissions / Instant Illumination & flicker free / CE, UKCA, & RoHS international standards / Environmentally friendly & part recyclable: no mercury or other hazardous materials used / Heavy duty die-cast aluminium housing & 4mm impact proof tempered glass / Complies with EN60598

Code	Nominal Size	Power Consumption	Lumen Output	Nett Weight	Windage
LS-LED170-020	370mm x 225mm x 94mm	20W	3,000lm	2.3kg	0.024 m <sup>2</sup>
LS-LED170-030	370mm x 225mm x 94mm	30W	4,500lm	2.3kg	0.024 m <sup>2</sup>
LS-LED170-040	370mm x 225mm x 94mm	40W	6,000lm	2.5kg	0.024 m <sup>2</sup>
LS-LED170-050	370mm x 225mm x 94mm	50W	7,500lm	2.5kg	0.024 m <sup>2</sup>
LS-LED170-060	370mm x 225mm x 94mm	60W	9,000lm	2.5kg	0.024 m <sup>2</sup>

## Dimensions and mounting



## Technical Specification

Beam Angle: Optic SR (Standard Road)  
 Luminous Efficacy: 150lm/W  
 Input Voltage: 100-277VAC  
 Color Rendering Index: ≥80Ra  
 LED Type: LM80 3030LEDs  
 Operating Temperature: -20°C to 50°C  
 Power Factor: ≥0.95  
 Mounting Option: Side-entry - Ø60mm  
 Post-top - Ø76mm (with accessory)  
 Mounting Height: 3-8m  
 Color Temperature: Neutral White 4000K  
 (Others available on request)

## Applications:



## Benefits -

- Economical solution for a wide range of exterior lighting applications

## Key Features -

- Robust design for maintained performance over time
- Dark sky friendly, no light pollution (ULOR 0%)
- Ø60mm side-entry as standard, optional adjustable bracket for Ø76mm post top
- Various dimming/control options: 3/7 pin NEMA ready or Zhaga socket on request
- High performance lighting with optimised light distributions designed for exterior lighting applications

## Photometric distribution

